

Official YouTube channel opened!



In October, we launched the official YouTube channel of the Kyoto Seishu Netsuke Art Museum. This channel introduces the history of netsuke and the appeal of contemporary netsuke. We will also focus on "people" related to "netsuke" and introduce their stories. The first video features our Director Kinoshita's first encounter with netsuke and how he later went on to establish the museum. The conversation will be facilitated by Ms.

Mari Okabe, a TV personality, in a light-hearted talk. Such a dialogue took place in a friendly atmosphere. When asked the last question, "What does netsuke mean to you?" He answered, "It is a mysterious art. The charm of netsuke is that it can create opportunities to meet many people who would never have met before. It is a work of art that has such a mysterious charm. We will continue to introduce the charm of netsuke on our official channel."



new series Tinged with strange fates.

HISTORY OF CONTEMPORARY NETSUKÉ

What is contemporary Netsuke? The Birth of a New Traditional Art Creation

Our museum exhibits mainly contemporary netsuke, along with classical netsuke. Although netsuke have a history of approximately 400 years, very few examples of early netsuke are known to exist, and most of the practical works from the Edo to Taisho periods have been shipped overseas. The netsuke industry was in a difficult situation in the first half of the Showa period, but as the country entered a period of rapid economic growth, there was a growing momentum to revive the netsuke industry, especially among young artists. Artists who aimed

at the "one artist, one work" principle produced ambitious works that came to be known as "contemporary netsuke. They broke new ground with their ideas and modeling skills. While overcoming the challenges of the previous era, the artists have constantly sought to express the "Now" and have invited the sympathy of those of us who live in the same era. Beginning with the next issue, we will be publishing a series of articles on the history of contemporary netsuke, focusing on the works and artists in the museum's collection and tracing their history.

Special Exhibition for January to March 2025

Netsuke are a drama reflecting life.

"Miracles beginning with Netsuke"

- 1 "Netsuke expressing an encounter with destiny"
■ January 7(Tue) - 31(Fri)
- 2 "Appreciation of the miraculous shape"
■ February 1(Sat) - 28(Fri)
- 3 "Worlds connected by netsuke"
■ March 1(Sat) - 30(Sun)

We have opened an official YouTube channel. We are posting the latest information and images of the Museum on Twitter and Instagram. We hope you to follow us.

- Awarded 9th Mizuki Jugodo Prize from Yamato Koriyama City, Nara Prefecture
- Featured in the February issue of Katei-gaho
- Featured in the NHK TV program "The Mark of Beauty"

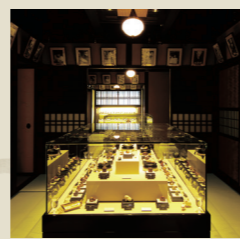


Official Website→



Kyoto Seishu Netsuke Art Museum

Contemporary Netsuke is the essence of Japanese aesthetics and craftsmanship. Many artists are creating netsuke works with adding new tastes. Kyoto Seishu Netsuke Art Museum is a museum that specializes in contemporary netsuke. We systematically collect, store, research and disclose documents and materials. Contemporary netsuke reflect social situation, technological progress and people's tastes of each era. Our mission is to contribute to the advancement of culture by researching contemporary netsuke from various viewpoints to investigate the characteristics of Japanese art.



As a leading company in the fields of printing and information processing, Sagawa Printing Co., Ltd. is supporting the Kyoto Seishu Netsuke Art Museum with the aim of passing Japanese culture to the next generation and developing global art.



[Index]

- Exhibition Highlights
- Letter from Museum
- History Talk

[Publisher]

Public Interest Incorporated Foundation
Kyoto Seishu Netsuke Art Museum
46-1 Mibukayougosho-cho Nakagyo-ku
Kyoto 604-8811 Japan
Phone: +81-75-802-7000
www.netsuke.jp/



The only contemporary netsuke art museum in the world
Special Exhibitions of Kyoto Seishu Netsuke Art Museum
An eternal romance refined by time.

"The gorgeous and spectacular world of Netsuke"

From our museum's collection of 6,000 pieces, we have selected a typical piece from each period to match the theme, with a different theme for each month. In October, we will be featuring the splendid culture of the Heian period. We will recall the court culture elaborated and expanded by the upper-class aristocrats. In November, the Golden Netsuke Award winners and nominees will be presented in one place. This award was established

independently by the museum to pass on netsuke culture. We will showcase the works of artists who have inherited the times and continue to take on the challenges of the future. In December, we will introduce "Nostalgic Netsuke" under the theme of the Showa period, which is both nostalgic and a bit fresh today. We will look back at the popular culture that blossomed during rapid economic growth after overcoming postwar reconstruction.

The gorgeous and spectacular World of Netsuke
時に育まれた、悠久の浪漫。

10月 『きよみへ王朝の美』展
"The Dynastic Beauty of Netsuke"
10月-11月(水)~11月(木)
October 1(Tue) ~ 31(Thu)

11月 『秋の名品展』
"Netsuke in all their glory"
11月-12月(金)~12月(日)
November 1(Fri) ~ 30(Sat)

12月 『ノスタルジックな根付』展
"Netsuke with nostalgic scenes"
12月-1月(日)~1月(日)
December 1(Sun) ~ 29(Sun)

京都 清宗根付館
Public Interest Incorporated Foundation
KYOTO SEISHU NETSUKÉ ART MUSEUM
〒604-8811 京都市中京区壬生賀陽御所町46番地1 (壬生寺東側)

SAGAWA PRINTING
佐川印刷株式会社は印刷及び情報加工の分野でのリーディングカンパニーとして、日本文化の継承と美術の発展を目指し、京都 清宗根付館を応援しています。

Promotional poster

10 Special Exhibition in October

A world of elegance blossomed at the court.
“The Dynastic Beauty of Netsuke”

■ October 1 (Tue) ~ 31 (Thu)

During the Heian period (794-1185), a dynastic culture centered on the emperor and aristocrats flourished. Escaping the influence of foreign art, an elegant and refined national culture was established. The origin of Japan's unique culture can be seen here. Please look at netsuke based on the elegant dynastic romance of the Heian period and the gorgeous works typical of Kyoto.



『 Listening to insects 』
 RYUSHI (1934~)
 H4.2cm

A beautiful Heian woman who looks like she came out of a Tale of Genji picture scroll.



『 Nostalgia 』
 TETSURO(1960~)
 H3.2cm

Taketori Monogatari (The Tale of the Bamboo-Cutter) is the oldest story in Japan, established in the early Heian period.



『 Murasaki Shikibu 』
 MICHI (1948~)
 H4.8cm

Murasaki Shikibu is considered the founder of women's literature as the author of "The Tale of Genji."



『 Hikaru Genji 』
 HOSEN (1942~)
 H4.6cm

While holding the child born of adultery, Hikaru Genji recalls the regrets he has committed in the past.



『 Dance of Shizuka 』
 TANETOSHI (1947~)
 H6.5cm

In the late Heian period, many white clappers danced to pray for rain, but when Shizuka danced last, it rained.

11 Special Exhibition in November

Ambitious works pioneering the era are here.
“Netsuke in all their glory”

■ November 1 (Fri) ~ 30 (Sat)

The Golden Netsuke Award* is the museum's largest annual event. This award ceremony has been held annually since 2014 to encourage free and new challenges by contemporary netsuke artists to pass on the netsuke culture. Artists are creating for the Grand Prix with their ingenuity and innovations. We will introduce works by artists who continue to take on new challenges.

*This award is given to the best overall work among the new



THE GOLDEN NETSUKU AWARDS
 GRAND PRIX

『 Cardsharps 』
 KUKAN (1968~)
 H5.0cm

A lady puts her hand on a card hidden in her chest. However, they are all cardsharps! Who will win?



THE GOLDEN NETSUKU AWARDS
 GRAND PRIX

『 Cuddle Close Together 』
 AKEMI (1959~)
 H6.1cm

From the stage where a nobleman looking for his deceased lover sees a butterfly and overlaps it with his lover.



THE GOLDEN NETSUKU AWARDS
 AWARD OF EXCELLENCE

『 Love Letter Substitution 』
 MOTOMASA(1976~)
 H5.9cm

She undertakes to write love letters on behalf of others and fulfills even the most unrequited love.



THE GOLDEN NETSUKU AWARDS
 AWARD OF EXCELLENCE

『 Delight 』
 KABU (1972~)
 H5.7cm

In the moon-like work, hares said to live on the moon, are pounding an elixir of immortality.



THE GOLDEN NETSUKU AWARDS
 CHAIRMAN'S AWARD

『 Travelling Appearance 』
 MIHO (1950~)
 H3.8cm

A play on words with tabi (Traveling) and tabi(socks). A rat dressed as a traveler uses a sock as an inn.

12 Special Exhibition in December

A little melancholy, a little refreshing.
“Netsuke with nostalgic scenes”

■ December 1 (Sun) ~ 29 (Sun)

The Showa period (1926-1989) evokes nostalgia. Even today, revivals in fashion and music are occurring and being reevaluated with a fresh impression. In the netsuke world, the 1970s saw the emergence of an artist consciousness and an increase in artistry. Nostalgic netsuke look back on the “Showa Period” when the rise of popular culture shined brightly, as it was also called the “100-million-people middle class.”



『 Sled Play 』
 TAISEI (1953~)
 H4.0cm

After 1960, there was a boom in leisure time skiing. Sledding was a popular pastime for children.



『 Matching Yutaka 』
 IPPU (1970~)
 H4.9cm

A woman's desire to wear a yukata of the same pattern as a token of her illicit love for a man.



『 Crowded train in Old Days 』
 MITSUKUNI (1959~)
 H4.0cm

The high growth of the Showa period was supported by the businessmen who commuted by crowded trains.



『 Grandma 』
 ITARO (1961~)
 H5.1cm

This is the author himself as a child, carried on his back by his grandmother, typical of the Showa era.



『 Festival 』
 KENJI (1932~)
 H4.6cm

In 1967, the total population of Japan surpassed 100 million. The town's summer festivals were also lively.